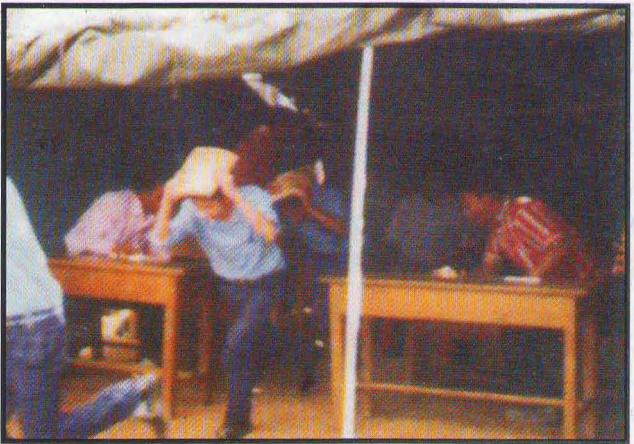




## Community Awareness And Preparedness



# SCHOOL SAFETY

## SERVICE TO HUMANITY

Presented by

**Directorate General of Civil Defence**

(Revamping Cell)

East Block -7, Level - 7,  
RK Puram, New Delhi - 110066

Phone : 011-26108304

FAX : 011-26196554

## **BEFORE EARTHQUAKE**

### **SCHOOL EDUCATION COMMITTEE**

- ◆ Initiating earthquake drills in the schools.
- ◆ Initiating hazards reduction procedures.
- ◆ Preparing a response plan.
- ◆ Establishing a communication plan.

## **TEACHERS**

- ◆ Hold classroom discussion.
- ◆ Practice drills.
- ◆ Hold hazards hunts, correct hazards where possible.
- ◆ Appoint two students monitors in case you are injured.
- ◆ Prepare class lists and identification tags with name, address, phone number, age the medic alert information.

## **STUDENTS**

- ◆ Learn what to expect and what do you during an earthquake.
- ◆ Identify hazards in the classroom, school, home.
- ◆ Participate in earthquake drills
- ◆ Know the name and address of your guardian, if designated by your parents.

## **PARENTS**

- ◆ Be aware of school's earthquake policy and procedures.
- ◆ Provide school with the name of an alternative guardian.

## **RESCUER (SCHOOL)**

- ◆ Coordinate with principal to identify and eliminate, if possible, potential interior and exterior earthquake hazards, inspect chemical storage areas regularly.
- ◆ Establish procedure for setting up emergency toilets, uncontaminated water supplies and first aid center.
- ◆ Know location and use of fire fighting equipment.

## **DURING EARTHQUAKE**

### **SCHOOL EDUCATION COMMITTEE & TEACHERS**

- ◆ Issue the TAKE OVER order at first sign of tremor.
- ◆ Assume "CRASH" position for 60 seconds.
- ◆ Talk calmly to reassure students.
- ◆ Review evacuation procedures.

## **STUDENTS**

- ◆ Follow teacher's instructions.
  - ◆ TAKE COVER under a desk or table.
  - ◆ ASSUME "CRASH" POSITION.
  - ◆ COUNT to 60.
- If out of the classroom take cover in a doorway in the "CRASH" position, count 60, join the nearest class when shaking stops.

## **AFTER EARTHQUAKE**

### **SCHOOL EDUCATION COMMITTEE & TEACHERS**

- ◆ Immediately carry out pre-arranged duties (e.g., shutting off gas main, fire fighting, water supply control, etc.)
- ◆ Report to principal and assist in search and rescue, if necessary.
- ◆ With supervisor, determine safety of building for possible re-entry.
- ◆ Assist in setting up emergency facilities, if necessary. Instruct students to evacuate lead class to designated assembly area.
- ◆ Be prepared to choose alternative escape in case of fire or exit blockage.
- ◆ Take class list, I.D. tags, and first aid kit.
- ◆ Administer first aid, if necessary.
- ◆ Do not re-enter the building unless instructed by the principal.
- ◆ Write I.D. information on for foreheads of primary and injured children, if tags not available.
- ◆ Reassure students.
- ◆ Remind students that parents may be delayed in calling for them.
- ◆ Encourage students to talk about their fears and anxieties.

## **STUDENTS**

- ◆ Follow evacuation instructions from teacher or designated monitor.
- ◆ Wear shoes.
- ◆ Put on identification tag.
- ◆ Comfort and reassure other students.
- ◆ DO NOT use an elevator.
- ◆ DO NOT re-enter school without permission.
- ◆ DO NOT go home without permission; be aware that your parent/guardian may be delayed in coming for you.
- ◆ Talk about what has happened.

## **PARENTS**

- ◆ Do not phone the school- they may be trying to reach you or emergency response services.



- ◆ When safe to travel, go to the school to collect your child, your child will not be released otherwise.
- ◆ If you are unable to reach the school, contact the designated guardian to collect your child.

## **PRINCIPAL**

- ◆ Set up a chain of command, and define staff roles and responsibilities.
- ◆ Establish earthquake and evacuation drills for all staff and students.
- ◆ In large school, decentralize first aid equipment, students lists, and instructions for turning off gas, electricity, water, etc.
- ◆ Be aware of your area's lines of communication, disaster planning, emergency channels, etc.
- ◆ Obtain battery-operated CB radio and learn local emergency radio frequencies.
- ◆ Ensure staff knowledge of industrial first aid.  
Stay calm your attitude will act as a role everyone.
- ◆ Ensure that all power, fuel and water mains have been shut off.
- ◆ Account for all staff and students.
- ◆ In a major quack, await instructions from emergency officials over battery-operated or car radio.
- ◆ Oversee conservation distribution of uncontaminated water, as well as preparation of emergency facilities.
- ◆ Allow dismissal of students only when it is safe to travel and a designated adult comes for him/her; keep accurate record of students released.

